

Daily Weather Update

Coastal Area Around The Sri Lanka

Information Fusion Center-Colombo

Amplitude

130j-2019

100

50

0

100

50

0

100

50

0

100

50

0

100

50

0

100

50

0

100

50

0

100

50

0

100

50

0

100

50

0

100

50

0

100

50

0



Information Fusion Center
Colombo
Sri Lanka

Date 2026.05.19

FORMATION FUSION CENTRE

WEATHER FORECAST FOR SEA AREAS AROUND THE ISLAND DURING NEXT 24 HOURS

Issued at 05.30 a.m. on 19 May 2026



**DEPARTMENT OF METEOROLOGY
SRI LANKA**

COLOMBO - SRI LANKA

CONDITION OF THE RAIN

Showers or thundershowers will occur at several places in the sea areas off the coast extending from Puttalam to Hambantota via Colombo and Galle. Showers or thundershowers may occur at a few places elsewhere around the island in the evening or night.

WINDS

Winds will be southwesterly. Wind speed will be (30-40) kmph. Wind speed can increase up to (50-60) kmph at times in the sea areas off the coast extending from Kankasanthurai to Puttalam via Mannar and from Hambantota to Pottuvil. Wind speed can increase up to 50 kmph at times in the sea areas off the coast extending from Puttalam to Hambantota via Colombo and Galle and from Kankasanthurai to Trincomalee.

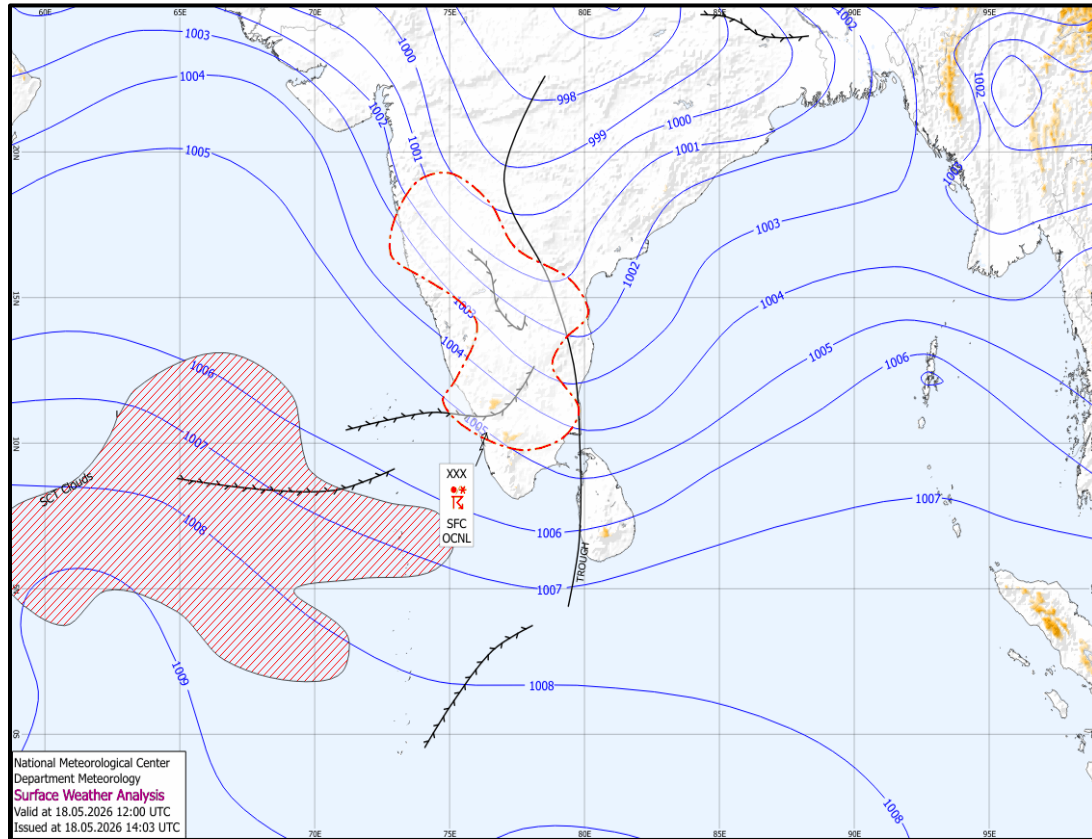
STATE OF SEA

The sea areas off the coasts extending from Trincomalee to Pottuvil via Kankasanthurai, Puttalam, Colombo, Galle and Hambantota will be rough at times. The other sea areas around the island can be moderate.

The wave height may increase (about 2.0 - 2.5m) in the sea areas off the coast extending from Mannar to Pottuvil via Puttalam, Colombo, Galle and Hambantota (this is not for land area).

Temporarily strong gusty winds and very rough seas can be expected during thundershowers.

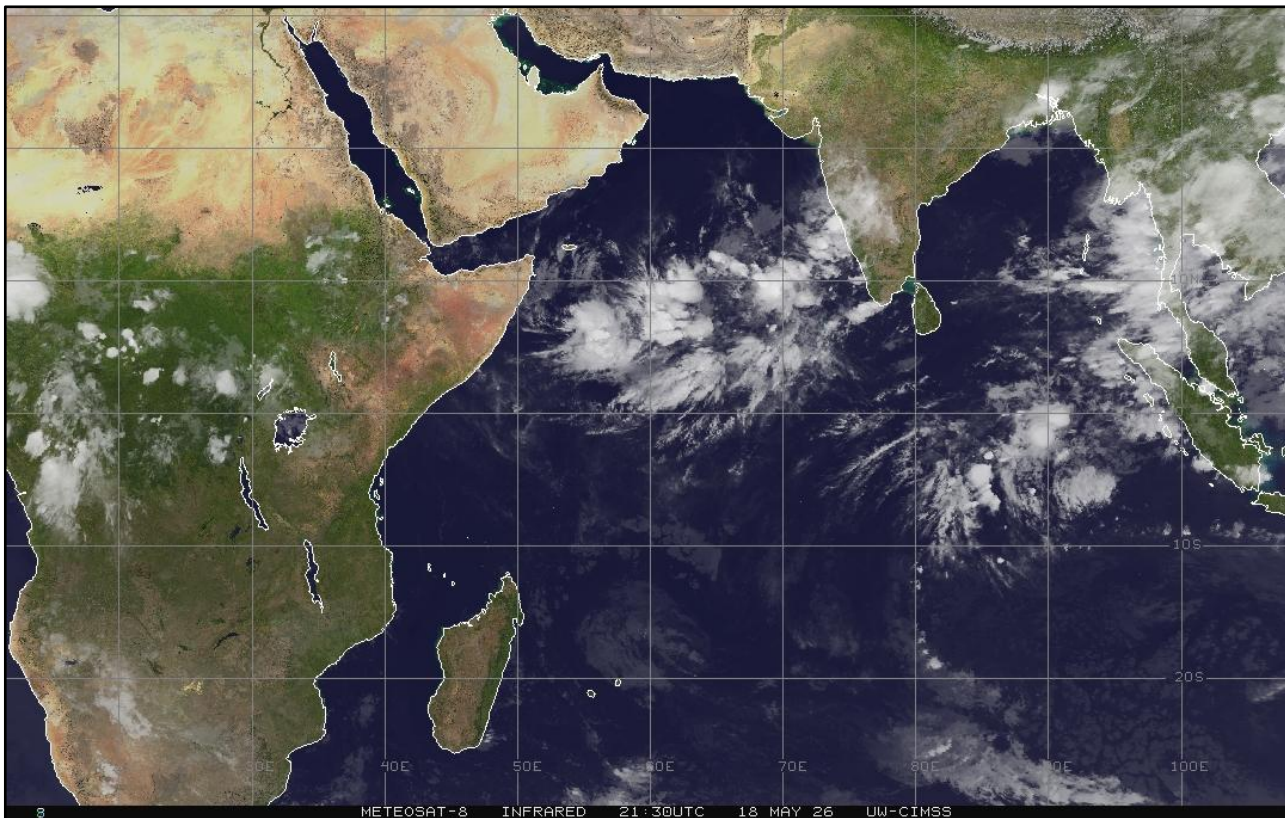
SURFACE ANALYSIS CHART



This analysis charts show the surface pressure pattern over Sri Lanka and the surrounding area. They display isobars (lines of equal pressure) and indicate areas of high (H) and low pressure (L) along with their central pressure value. Isobars are represented by solid blue lines, spaced every 1 hPa. High pressure is usually associated with mainly dry, settled weather with light winds, while low pressure is normally associated with unsettled weather, which is often wet and windy. The lower the pressure, generally the stronger the winds and the heavier the rain.

The map shows Coordinated Universal Time (UTC) and the local time is UTC+5.30.

SATELLITE IMAGE



19-May-26

IFC -Colombo



**Information Fusion Center
Colombo
Sri Lanka**

THANK YOU

The Officer Incharge
Information Fusion Centre - Colombo
Naval Headquarters, Colombo, Sri Lanka
+94 11 719 480 6
+94 74 120 4829
ifc@navy.lk
ifc.cbo@gmail.com